

PRESSING DENTAL

REPUBBLICA DI SAN MARINO

Linea INIEZIONE *Marzo 2017*



PRESSING DENTAL **INJECTION SYSTEM Division**



- **TECHNOPOLYMERS**
- **INJECTION EQUIPMENTS**
- **PRODUCTS FOR INJECTION**



F.J.P. COMPOUND



Thermoplastic resin for denture "elastic", which for its characteristics, it is confirmed as a good alternative to dentures nylon. Available in the "standard" type and in a "more elastic" type.

Features

- * Quite elastic
- * Semi-transparent
- * Low absorption of liquids
- * No need of drying
- * Good color stability
- * Good accuracy
- * Excellent stability dimensional
- * Easy to finish and be polished by conventional techniques
- * Ability of adhesion to the acrylic resin (with the aid of "Acecri" product)
- * Sterilized at 121 ° C
- * Reusable (if used with the equipment: *J-100 Evolution, J-200 Pressing, You and Me, Easy Clasp*)

TECHNICAL FEATURES

ELASTIC MODULE from 1800 MPa to 2200 MPa (Rif. ISO 178)

ABSORPTION Media 1,2 ug/mm³ (Rif. ISO 10477)

SOLUBILITY Media < 0,1 ug/mm³ (Rif. ISO 10477)

DON'T CONTAINS MONOMER



FLEXI J



Thermoplastic polymer based nylon. The combination of its components make it ideal for the production of partial dentures and total "elastic"

Type 1 * more elastic characteristics similar to Valplast (USA)

Type 2 * more elastic characteristics similar to Perflex (Israel)

Type 3 * stiffer characteristics similar to Flexite (USA)

Features

- * Absence of liquid monomer
- * high accuracy
- * The absence of joint hikes
- * reduced processing times = high productivity
- * Adhesion with the same polymer thanks to the specific primer

ELASTIC MODULE: Depending on the type from 1600 MPa to 2500 MPa (Rif. ISO 178)

ABSORPTION Depending on the type from 2,9 – 4,1 ug/mm³ (Rif. ISO 10477)

SOLUBILITY Media < 0,1 ug/mm³ (Rif. ISO 10477)



TECNOPOLIMERI

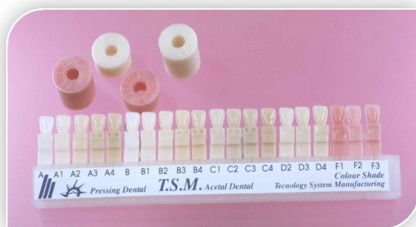
TMS ACETAL DENTAL



Technopolymer thermoplastic with a crystal structure, devoid of monomer, indicated in the realization of various prosthetic solutions: aesthetic hooks of partial denture, partial dentures, removable bridges, post-surgical space maintainers, temporary bridges, reinforcing structures for temporaries, stump pins, dies implant, splints, orthodontic retainers, allowing, therefore, to replace the acrylic resins and the metals in different prosthetic solutions.

FEATURES

- * High abrasion resistance
- * Excellent resistance to traction and impact
- * High elastic memory
- * Low thermal conductivity
- * Non-allergenic and non-toxic
- * Excellent aesthetic



TSM Acetal Dental is available in 20 color shades, 17 of them in comparison to the color scale "Life" and three shades of pink colors

TECHNICAL FEATURES

ELASTIC MODULE 3536 MPa (Rif. ISO 178)

ABSORPTION Media 2,4 ug/mm³ (Rif. ISO 10477)

SOLUBILITY Media < 0,1 ug/mm³ (Rif. ISO 10477)

DON'T CONTAINS MONOMER



PLASTIC STEEL



Technopolymer reinforced with glass fibers, with very high mechanical characteristics "similar to metals", it is indicated for the production of substructures and abutment pins mono root

Suitable for substructures and / or abutment pins

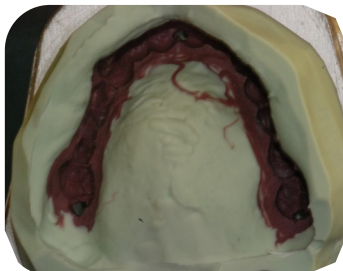
Features

- * Absence of monomer
 - * Good accuracy
 - * Excellent flexural strength
 - * For proper processing the product should always be covered
- Possibility of adhesion to the acrylic resin (with the aid of Acecristal product)

ELASTIC MODULE 14.700 MPa (Rif. ISO 178)

ABSORPTION Media 11,4 ug/mm³ (Rif. ISO 10477)

SOLUBILITY : Media < 0,26 ug/mm³ (Rif. ISO 10477)



THERMO BRIDGE



Acrylic-based polymer, free of liquid monomer, hypoallergenic, available in various colors: 14 in reference to the color shade Vita, 2 pink and 1 transparent.

The Thermo bridge is a special multi - based polymer of polymethylmethacrylate, specially designed for the production of temporary crowns and bridges. Its micro elasticity and high precision make it suitable for full dentures in pink version.

FEATURES

- * Absence of liquid monomer
- * Membership with the same polymer
- * Adhesion with acrylic resins conventional
- * Excellent dimensional stability
- * high accuracy
- * The absence of joint hikes

The reduced processing time allows a high productivity

ELASTIC MODULE 2750 MPa (Rif. ISO 178)

MIGRATION TEST OF METHYL METHACRYLATE Assignment mg/dm² < 0,01

ABSORPTION Media < 1,0 ug/mm² (Rif. ISO 10477)

SOLUBILITY Media 13,74 µ/mm² (Rif. ISO 10477)

CONTAINS MONOMER MMA 0,3 %



CORFLEX ORTHODONTIC



Technopolymer obtained from a mixture of copolimeri with high molecular weight, based on ethylene and vinyl acetate. Due to its characteristics the product is widely used in the production of orthodontic positioners, oral showers and protect teeth for sports

CARATTERISTICHE

The Corflex Orthodontic, if subjected to rapid mechanical stresses and applicants, does not show cracks by tension and has a high flexibility with behavior similar to the rubber materials. Other significant features are the very low absorption of liquids and the good elastic memory and the 'excellent resistance to acids.

The Corflex Orthodontic is available in a wide range of colors, all semi-transparent; transparency allows you to perform tests even after placement in the mouth.

ABSORPTION Media, depending on the type from 0,3 -3,2 ug/mm³ (Rif. ISO 10477)

SOLUBILITY Media depending on the type < 0,2- 1,1 ug/mm³ (Rif. ISO 10477)

HARDNESS 80 and 60 Shore A



J100 EVOLUTION



J-100 Evolution is a polyvalent injection system which allows to inject all thermoplastic materials, ensuring a multiplicity of applications, from the aesthetic hooks up to the elastic prostheses and to protect teeth for sportsmen

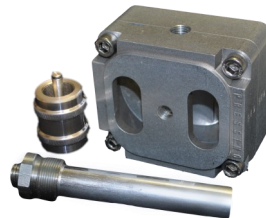


It also offers the possibility of injecting all of the hot acrylic resins and polymerized in 30 minutes, under constant pressure

J100 EVOLUTION ensures the control of the temperature, of the injection times and the subsequent cooling under constant pressure, by means a microprocessor.

Features :

1. A new casting system
2. LCD Display
3. New temperature control system
4. It has 30 pre-set programs editable
5. Vision of the set program and function
6. Ability to schedule a pre-injection alarm



Injection of conventional acrylic resins - I.C.A.R.



The I.C.A. R. device is aimed at those who use injection equipment like Actio, J100 Evolution and J200 Evolution. The applied technology allows the use of equipment such as injectors for all conventional acrylic resins (powder and liquid). With the I.C.A.R. device is possible to maintain the resin under constant pressure during the polymerization phase, improving the compactness and accuracy and avoiding occlusion increases.

YOU AND ME



You And Me is the special equipment for injection of thermoplastic products, which presents the same electronic control requirements of "J 100 Evolution" equipment and therefore guarantees the same quality but at a lower price

ECONOMICA, EASY, ERGONOMICA

Differences with J100 Evolution :

- A) L'absence of the cooling fan
- B) Fewer programs available (15)
- C) The diameter of only 22 cartridge that is inserted directly into the melting furnace with characteristics very similar to J-100 Evolution model



Basic Kit for model J100 Evolution and model You And Me

N° 1 muffle type 100

N° 1 conf. J-100 tube conf. da pz. 60 + 60 tappi *cod. 00040*

N° 1 conf. Tube lubricant tipo red 50 cc. *cod. 00050*

N° 1 conf. Universal Polish 50 cc. *cod. 00060*

INJECTION SYSTEM



EASY CLASP



EASY CLASP is a mini manual injection press, suitable for the production of clasp and space maintainers. It can be used with direct technique (with the aid of a silicone) or indirect due to its muffle and is designed to ensure a post constant pressure of about 50kg. The Easy Clasp system give a modest injection pressure and it is only recommended for the production of provisional elements

Kit EASY CLASP:

- ◆ Centering with thermo insulation for muffle
- ◆ Centering device for direct injection
- ◆ Metal cap for temperatures higher than 250 ° C diam. 16
- ◆ Centering for direct injection
- ◆ Metal cap for temperature higher than 250°C diam.16
- ◆ Nipper to close the tubes



To know the Pressing Dental injection line, materials and equipments, you can participate in our FREE COURSES

PROGRAMMA DEL CORSO

- Presentazione dei tecnopolimeri: Caratteristiche e lavorazioni
- Descrizione delle fonditrici per l'iniezione e la polimerizzazione di resine acriliche convenzionali
- Presso iniezione dei tecnopolimeri Pressing Dental



Per info sui corsi:

Pressing Dental TRAINING

Tel. 3273138154 training@pressing-dental.com



J200 EVOLUTION



A special automatic equipment suitable for large productions.

J-200 Evolution has two fully autonomous and independent injection systems, an electronic with 30 pre-set programs and forced ventilation for cooling of the muffles and other additional devices, which facilitate the operator in carrying out their work

ACTIO



Actio is a manual injection system.

The injection stage must be carried out by the operator, the pressure maintenance after injection is guaranteed mechanically by a spring system and the temperature control is of the electronic type with microprocessor.

The fusion time of subsequent cooling must be guaranteed by the operator with the aid of an external timer.

Basic Kit model J200 Evolution and Actio

N° 1 muffle type 100

N° 1 conf. J-100 tube conf. da pz. 60 + 60 tappi *cod. 00040*

N° 1 conf. Tube lubricant tipo red 50 cc. *cod. 00050*

N° 1 conf. Universal Polish 50 cc. *cod. 00060*

PRODUCTS AND AUXILIARY



J-100 Tube pz. 60

Containers for resin injection for the following Pressing machines:

Actio, J-100, J-200 Evolution

Contents 60 tubes + 60 caps

Cod. 00040

J-100 Tube pz. 75

(75 tubes without teflon stoppers) Cod.00041



J-100 maxi Tube (diam.25,4) pz. 45

Containers MAXI for resin injection for the following Pressing machines:

Actio, J-100, J-200 Evolution

(45 tubes + 45 teflon stoppers)

Cod. 00045



J-100 Maxi Tube (diam.25,4) pz. 55

(55 tubes without teflon stoppers)

Cod. 00046



Tubo contenitore Tube container for tubules J-100 Maxi

Cod. A19-25

Tappo in metallo Metallic caps for tubules Maxi

Cod. A-21 maxi



Soft Tube pz. 60

Soft Tubes for the following injection machines:

MG.Newpress, Polyapress etc.

Contents 60 tubes + 60 caps

Cod. 00042



Soft Maxi Tube diam 25,4 pz. 45

Soft Tubes for the following injection machines: Flexite, Valplast etc.

Contents 45 tubes + 45 caps (45 tubes + 45 caps)

Cod. 0047



Tubi Speciali EASY Clasp System

Conf da 36 hard tubes diam. 18 , with caps Cod. E-C 36

Conf da 44 hard tubes diam. 18 , without caps Cod. E-C 44

Tube Lubricant type Red

Special lubricant suitable for high temperatures for J-100

for the Pressing machines : J100, You and Me ecc..

Cod. 00050 (Packaging 50 cc.)

PRODUCTS AND AUXILIARY



Muffle tipo 200

Big flask for the injection of large works, for example two prostheses
Cod. 00025



Muffle tipo 100

Universal flask for different types of injection
Cod. 00020



Muffle tipo 50

Double flask for small details
Cod. 00030



Muffle Easy Clasp

Round flask for all kind of injection equipments
Cod. E-C 19



AVV-C

Very handy pneumatic screwdriver, specific for flask, it allows screwing and unscrewing muffle screws always with the same strength

*Fixing point 3/8 - 8 allen key e AVV-2 fixing point 1/4 - tubo mm.8
cod. AVV-C*



AIRHAM

Air hammer to remove plasters and coatings
(3 tips inclusive)
Cod. 00201

PRODUCTS AND AUXILIARY



Complex Lux S-8

Complex Lux S-8 is a universal -type equipment with 9 lamps. Thanks to the selector it is possible to use all the lamps or the 8 UVA lamps placed alternatively above and on each side of a turntable. At the back, behind a protection glass, a halogen lamp allows the light to act on any part of the prosthesis. The controls are placed on the front panel, it is possible to select the duration of the photopolymerisation cycle. On the rear part, a cooling fan is placed beside the hour counter, to prevent any overheating of resins during the polymerisation stage. *Cod. 00402*



Complex Lux S-4

Complex Lux S4 is a high-luminous density equipment which is suitable both for laboratories and consulting rooms. It has a wide polymerization chamber and an even photopolymerising light, thanks to the arrangement of the 4 lamps. The drawer - container has a safety device which avoids the undesired start of the luminous source if it remains open, it works on a fixed track and remains steady on the equipment. The digital electronic timer placed on the front panel enables to set the polymerisation time according to the user's needs, the end of cycle is marked by alarm. *Cod. 00403*



Complex Lux S-4 Eco

Complex Lux S-4 ECO is similar to Complex Lux S-4.

The lamps are more economical type and is completely made of plastic material. On the back is one switch which allows you to select the "continuous function" or the 2-minute duration timer. The front door has no safety microswitch. *Cod. 00403 eco*



Cofanetto Color System

The Color System Kit is created specifically in order to allow dental technicians to colour the surfaces of TSM Acetal Dental and acrylic resins according to their requirements.

The Colour System kit comprises:

- N° 16 types of pigments in pottery jars;
- N° 1 bottle of 10 ml of "Acelux"(methyl methacrylate based photosensitive lacquer)
- N° 1 mixing palette made of ceramics;
- N°1 bottle of 10 ml of "Lux Clea"(Degreasing agent and solvent for brushes);
- N°2 brushes (Type "00" and "1")

Cod. 00300



Cofanetto Mini Color System

Tipo "Vita"

N°10 types of pigments in pottery jars *Cod. 00299 V*

Tipo "Ivoclar"

N° 9 types of pigments in pottery jars *Cod. 00299 I*



Special USA Doctor Kit

The Special USA Doctor Kit comprise

- N°1 jar Color Vita scala A
- N°1 jars Color Vita scala B
- N°1 jars Color Vita scala C
- N°1 pottery jars Color Vita scala D
- N°1 pottery jars Color Blu translucent (enamel effect)
- N°1 pottery jars Color White
- N°1 bottle 10ml Lux Ceon (primer e detergent) *Cod. 00297*
- N°1bottle 10 ml Acelux (photosensitive light cure resin) *Cod. 00297*

Acelux

Acelux is a photosensitive light cure resin. It is used as a transparent light curing stain lacquer for sealing stains on TSM Acetal Dental and acrylic resin in conjunction with the Pressing Colour System. Acelux needs to be photopolymerised using UVA lamps in order to maximise its characteristics. We recommend photopolymerised lamps are used, which produce a polymerisation spectrum from 320 to 550 Nm.(e.g. using the Pressing Complex Lux S-8 (light cure unit)

Packaging: 2x10 ml *Cod. 00302/1* 30ml *Cod. 00095*

Lux Clea

Primer to use before Acelux product. Lux Clea is also used to clean brushes

Packaging da 2 x 10 ml *Cod. 00302/2*



PRODUCTS AND AUXILIARY



TSM Acetal Dental

TSM ACETAL DENTAL is a thermoplastic technopolymer with a monomer-free crystalline structure and is a product of formaldehyde polymerization. Its characteristics are: high resistance to abrasion, excellent tensile and shock strength, high elastic memory, low thermal conductance and rigidity. Furthermore, it is neither allergenic, nor toxic. These features, coupled with remarkable aesthetic performance, make "TSM Acetal Dental" a good substitute for acrylic resins and metals in many prosthetic applications. Packaging multi colors gr.1150



TSM Acetal Dental

00551 A	00556 B			(Rosa)
00552 A I	00557 B I	00561 C I		00568 F I
00553 A2	00558 B 2	00562 C 2	00565 D 2	00569 F2
00554 A 3	00559 B 3	00563 C 3	00566 D 3	00570 F3
00555 A4	00560 B4	00564 C 4	00567 D4	

Packaging gr.500



Speciale Easy Clasp

00551-2 A	00556 -2B			(Rosa)
00552-2 A I	00557 -2B I	00561-2 C I		00568 -2F I
00553 -2 A2	00558 -2 B 2	00562-2 C 2	00565-2 D 2	00569 -2F2
00554 -2 A3	00559 -2 B 3	00563-2 C 3	00566 -2D 3	00570 -2F3
00555 -2 A4	00560 -2 B4	00564 -2C 4	00567 -2D4	

confezioni da gr. 250 cadauna (per tubetti diam. 18):



Acecrl

Specific product for the chemical bonding of TSM Acetal Dental and acrylic resins. It's indicated also for F.J.P. and Plastic Steel.

NB: Acecrl must be kept at 8° - 21°C temperature

Cod. 00082



Marble Stone Evolution 00084-E

Special plaster recommended o develop models for TSM Acetal Dental processing.

Packaging: Kg. 3 Cod. 00084E

Gesso-Hard

Plaster extra hard, IV Class. Ideal for stumps and indicated for the mold and counter mold the muffles in the injection system Packaging: Kg. 20



Universal Polish

Universal polishing paste for acetal and acrylic resins

Packaging: 50 cc Cod. 00060

PRODUCTS AND AUXILIARY

The.r.mo Bridge

"The.r.mo.bridge" is a multipolymer member of the acrylic family of polymers developed by Pressing Dental for provisional crowns and bridges. The.r.mo.bridge" is available in a large colour range comparable with the "Vita" colour scale and in two shades of pink colors. The product adheres to conventional acrylic resins and all acrylic-based composites.



00651 col. A	00655 Col. B	00659 Col. C	00663 Col. D
00652 Col. A I	00656 Col. B I	00660 Col. C I	00664 Col. D2
00653 Col. A 2	00657 Col. B2	00661 Col. C2	00665 Col. D3
00654 Col. A 3	00658 Col. B3	00662 Col. C3	00666 Col.D4
00650 Trasparente	00667 Col. Rosa Granuli	00668 Colore Rosa in dischetti	

Packaging: gr. 200

Flexi. J Nylon

Flexi-J is a nylon-based thermoplastic polymer, the combination of its components make it the ideal product for the manufacturing of mobile partial and total "elastic" prostheses. The elastic memory of the material ensures the possibility to overcome remarkable undercuts, thereby making the product "unbreakable".

Flexi-J. is available with 2 different elastic modules - type 1 and type 2 and in different colours.

Type 1 is more elastic and translucent, whereas type 2 is stiffer and totally transparent. If a prosthesis is needed with an intermediate elastic module, the two products may be mixed.



Cod. A -00800 Tipo 1 col. Trasparente
Cod. B - 00800 tipo 1 colore Rosa
Cod. C - 00800 tipo 1 colore Rosa
Cod. D - 00800 tipo 1 colore Rosa

Tipo 2
Cod. F - 00800 col. Trasparente
Cod. G - 00800 tipo 2 colore Rosa
Cod. H - 00800 tipo 2 colore Rosa

Packaging: gr. 250

Flexi J Primer

Adhesive for poliammidi Packaging: 30 cc.

N.B. This adhesive can't be used with F.J.P. product, only for poliammidi

Cod. 00800-P



Plastic Steel

Tecnopolymer reinforced with fibres, excellent resistance to flexure

Suitable for substructures and stump pins

I

Packaging: gr. 250 Cod. 00702-250



PRODUCTS AND AUXILIARY

F.J.P.

F.J.P. is a compound alternative to nylon, with the following characteristics: Moderately elastic; Semi-transparent; low liquid absorption (one-third of nylon); no need drying up; good colour stability ; high precision ; no bubbles after melting, also with a big depth; good dimensional stability; easy to round off; Polished with convencional techniques; Adherence to acrylic resin (with the help of a primer); Sterilizable a 120° C; Reusable (if used with equipment J-100 evolution e J-200 Pressing)

NB: F.J.P. can adhere to traditional acrylic with the product Acecril

Product Standard Elasticity

Cod. 00900 – A white

Cod. 00900 -B, C, D; Pink with fibers

Product More Elastic

Cod. 00900 - F white



Gyflux

Photopolymerizable sealing film for models (applied on plaster)

Cod. 00090 Packaging da 30 cc.

Cod. 00091 Packaging da 50 cc.



Super Polisch

Universal polishing paste for F.J.P. and nylon-bases resins

Cod. 00060 –S Conf. da 50 cc



Unibrillant

Universal polishing paste for F.J.P. and nylon- bases resins.

Cod. Unib. 08 content 8 cc.

Cod. Unib. 50 content 50 cc.



Finishing Kit

for elastic resins: **F.J.P. (Compound) and Flexi-J. (Polyamide-Nylon)**

Cod. F101 Green rubber polisher for polishing diam. 10 mm
Packaging pz. 12 4000 a 7000 RPM

Cod. F102 Green rubber polisher for polishing diam. 5 mm
Packaging pz. 12 4000 a 7000 RPM

Cod. F103 Coarse grain soft disc diam. 22 mm
Packaging pz. 12 3000 a 5000 RPM

Cod. F104 Fine grain soft disc diam. 22 mm
Packaging pz. 12 3000 a 5000 RPM



NB: Products to combine with Super Polisch e Unibrillant



PRODUCTS AND AUXILIARY

Corflex orthodontic

Corflex-Orthodontic is a synthesis product obtained from a mixture of high molecular weight copolymers of ethylene and vinyl acetate.

Corflex-orthodontic is widely used to make orthodontic positioning devices, oral devices and gum shields for sport activities.



Cod. 01001 col. Trasparente	Cod. 01005 Col. Rosa	Cod. 01009 Col. Blu
Cod. 01002 Col. Bianco	Cod. 01006 Col. Rosso	Cod. 01010 Col. Nero
Cod. 01003 Col. Giallo	Cod. 01007 Col. Fucsia	
Cod. 1004 Col. Verde	Cod. 01008 Col. Azzurro	

Packaging gr. 400 cad.

Packaging assorted colors gr. 600



Poli Corflex

Polishing felts for Corflex Orthodontic

Packaging : 11 pieces

Cod. 00085



Corflex Brilliant

Aromatized polishing fluid for soft resins, for example "Corflex Orthodontic"

Packaging : 25 cc Cod. 00080



Plastitanium

This product allows to made a soft base , like a mucouse membrane of mandibular bone, and can be insert and remove into the rigid base with a easy pressure of connections of any forms.

Packaging gr. 200 Cod. 01111



Masky

The mask for your metal; it is a thermosetting product created to mask the metallic parts of prostheses.

Available:

Cod. M-100 White color - packaging gr- 6-8.

Cod. M-105 R Pink Color - packaging 3 gr.

(n.b. is possible to obtain other products mixing it with the Colour System Kit)

Coating for Masky Cod. M-I packaging Kg. 1.

PRODUCTS AND AUXILIARY



Fast Tray

Fast Tray is a photopolymerising material available in 50 pieces packages in 3 colours, blue, neutral and pink. Fast Tray is very rigid once cured and is used in the construction of special trays and occlusal registration bases. It has an even thickness which does not need to be mixed and is easily shaped, any excess material can be used again if stored correctly (e.g. in the box provided, away from UVA rays) Polymerization is achieved when using UVA type lamps.



Fil wax

White Wax suitable for making channels during the processing.

Available diameters:

diametro 2 mm conf. da gr. 140 *cod. 02160*

diametro 3 mm conf. da gr. 160 *cod. 02161*

diametro 4 mm conf. da gr. 160 *cod. 02162*

diametro 5 mm conf. da gr. 160 *cod. 02163*



Separating Pressing

The "Separating Pressing" is a special insulating material for:

Acrylic teeth / plaster

Acrylic resin / Plaster

Plaster / Plaster



Sil Press

Sil Press is a two-component silicone elastomer which cures at room temperature by polyaddition reaction.

Available in the following versions :

Cod. 00352-10 Tipo 10 shore A kg.1+1 Cod. 00353-10 Tipo 10 shore A kg.5+5

Cod. 00352-21 Tipo 21 Shore A kg. 1+1 Cod. 00353-21 Tipo 21 Shore A kg. 5+5

Cod. 00352-28 Tipo 28 Shore A kg. 1+1 Cod. 00353-28 Tipo 28 Shore A kg.5+5

Available packaging kg. 5



Gemini

Silicon addition 1:1

Gemini is a two component silicone elastomer which cures at room temperature by polyaddition reaction, specific for templates.

Cod. 00381-82 Tipo 82 Shore A Pink color kg. 5 A + Kg. 5 B

Cod. 00381-90 Tipo 90 Shore A Blue light color kg. 5 A + Kg. 5 B



Odikrom Plus

Chromatic alginate for elastic, high - precision mould impression. The product, is specifically made for the taking of mould impression in dentistry, and for the duplication of plaster manufactured items. Packaging gr. 450 *Cod.15010*

Odikrom Long Time

No chromatic alginate for duplication of plaster manufactured items. Working time: 7 minutes Packaging gr. 450 *Cod. 5010 L*



Expo -Model

A simple solution for your exhibition moulds Epoxy Resin compound

Packaging: 500 gr. compound A + 100 gr. B

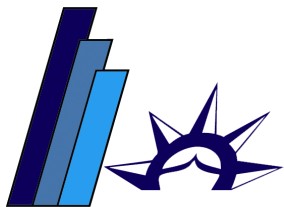
Colors: (Packaging of 5 ml)

Cod. E-MY yellow

Cod. E-MG green

Cod. E-MR red

Cod. E-MB Blu



Pressing Dental®



- ⇒ **PRODUCTION**
- ⇒ **TRAINING**
- ⇒ **SALE**
- ⇒ **AFTER SALE ASSISTANCE**



Pressing Dental srl

Via Onesto Scavino 4, 47891 Falciano Repubblica di san Marino
Tel. 0541 909948 – Fax. 0541 909958

From other country : Tel ****378 909948—** 378 909958**

WWW.pressing-dental.com - Email: **info@pressing-dental.com**